



JOHN CALVIN SCHOOL

FREE REFORMED SCHOOL ASS. (TAS.) INC.

49-53 HOWICK STREET
LAUNCESTON, TAS. 7250
Ph: 6344 3794,
Email: admin@jcs.tas.edu.au
www.jcs.tas.edu.au
ABN No 32 415 227 180

Vehicle and Pedestrian Safety Procedure

To minimise the risk of accident and injury, and to enhance the flow of traffic in and around the school grounds, please adhere to the following procedures that have been recommended by Tasmania Police.

Arrival:

- Vehicles should access the school driveway by the west-bound lane of Howick St. For many people this means a short detour up Galvin Street, along Mulgrave St., left onto Howick St. then left into the school grounds. (see Figures 1 & 2)
- **Do not** approach from the west (up Howick Street) and turn right across the lane.
- All pedestrians should use the gate in front of Admin building then travel down side of building down to the school when arriving. Students should not play on the front playground before school. (see Figure 1)

Parking:

- When parking in the school/church car park, we request that all vehicles are reversed in to enable better vision when departing.
- If the car park is full, overflow parking is available on playground (only when bollards and tape are not in place). (See Figure 1)

Departure:

- Kinder students will be escorted to the undercover area.
- Prep to grade 10 students will be called by individual or family groups to the waiting cars
- All vehicles leaving the school grounds must turn left. (See Figure 1)
- Those wishing to travel east up Howick Street must first turn left then go around the roundabout.

Speed:

- All vehicles must obey a 10km/h speed limit in the school car park.

Figure 1: Left only entry to and exit from school car park

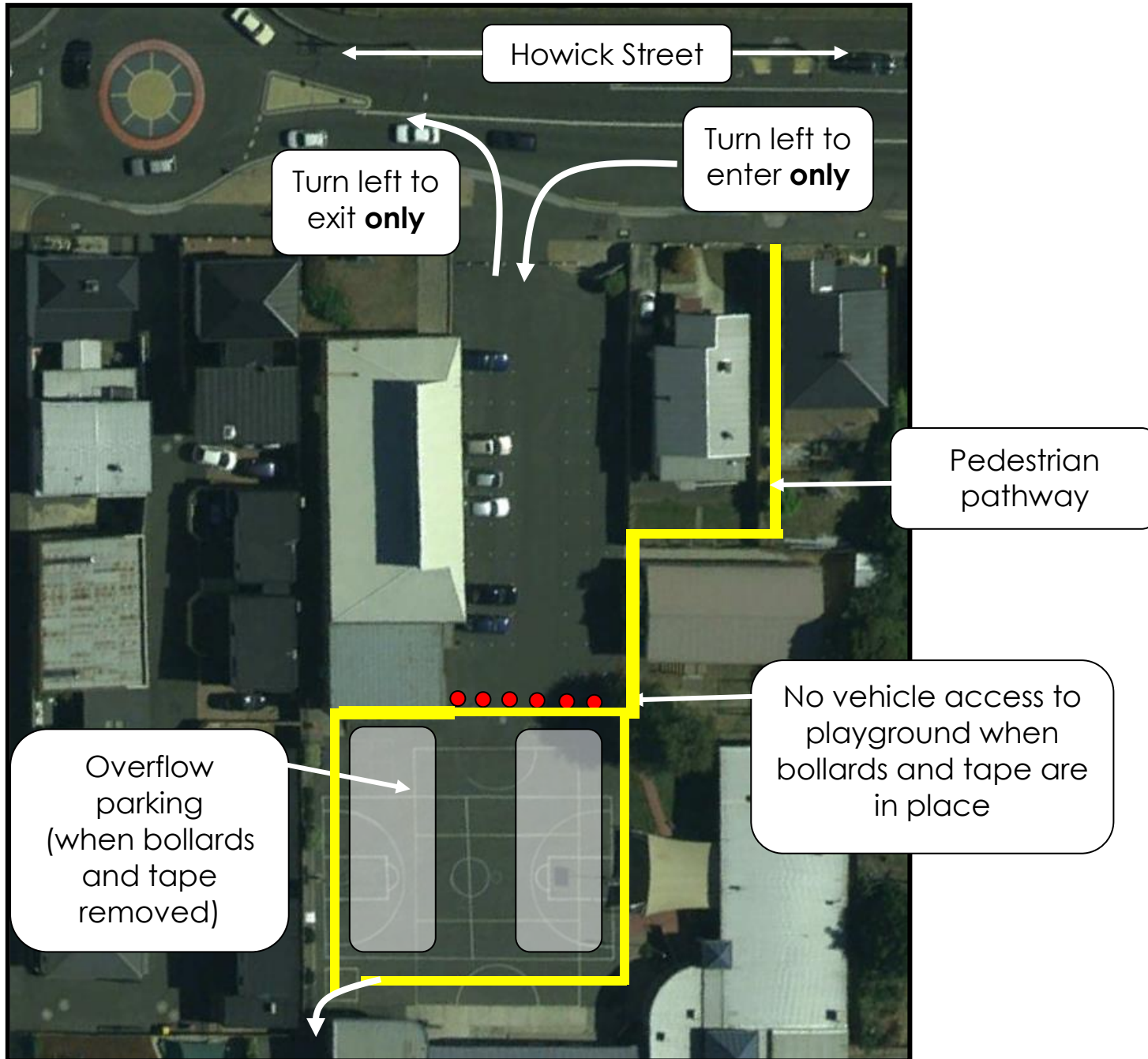


Figure 2: Preferred approach from Wellington Street

