



JOHN CALVIN SCHOOL

FREE REFORMED SCHOOL ASS. (TAS.) INC.

53 HOWICK STREET
P.O. BOX 89, LAUNCESTON, TAS. 7250
Ph: 6344 3794, Fax: 6344 3690
Email: admin@jcs.tas.edu.au
www.jcs.tas.edu.au
ABN No 32 415 227 180

Vehicle and Pedestrian Safety Procedure

September 2016

To minimise the risk of accident and injury, and to enhance the flow of traffic in and around the school grounds, please adhere to the following procedures that have been recommended by Tasmania Police.

Arrival:

- Vehicles should access the school driveway by the west-bound lane of Howick St. For many people this means a short detour up Galvin Street, along Mulgrave St., left onto Howick St. then left into the school grounds. (see Figures 1 & 2)
- **Do not** approach from the west (up Howick Street) and turn right across the lane.
- All pedestrians should use the side of the driveway nearest the church, then travel around the edge of the playground closest to the school when arriving. Students should not play on the front playground before school. (see Figure 1)

Parking:

- When parking in the school/church car park, we request that all vehicles are reversed in to enable better vision when departing.
- If the car park is full, overflow parking is available at the bottom (west) end of the front playground (only when cones are not in place). (See Figure 1)

Departure:

- Kinder students are to be picked up by a parent from the kindergarten gate or inside the Kindergarten if it is raining.
- Prep to grade 10 students must wait with their transport supervisor (wearing a high-visibility vest) until they have been given permission to board the bus or go home. Staff will check student names off a list to ensure everyone is accounted for.
- Students travelling with parents/guardians are to be accompanied by an adult to their vehicle using the pedestrian path – not walking up the driveway.
- All vehicles leaving the school grounds must turn left. (See Figure 1)
- Those wishing to travel east up Howick Street must first turn left then go around the roundabout.

Speed:

- All vehicles must obey a 10km/h speed limit in the school car park.

Figure 1: Left only entry to and exit from school car park

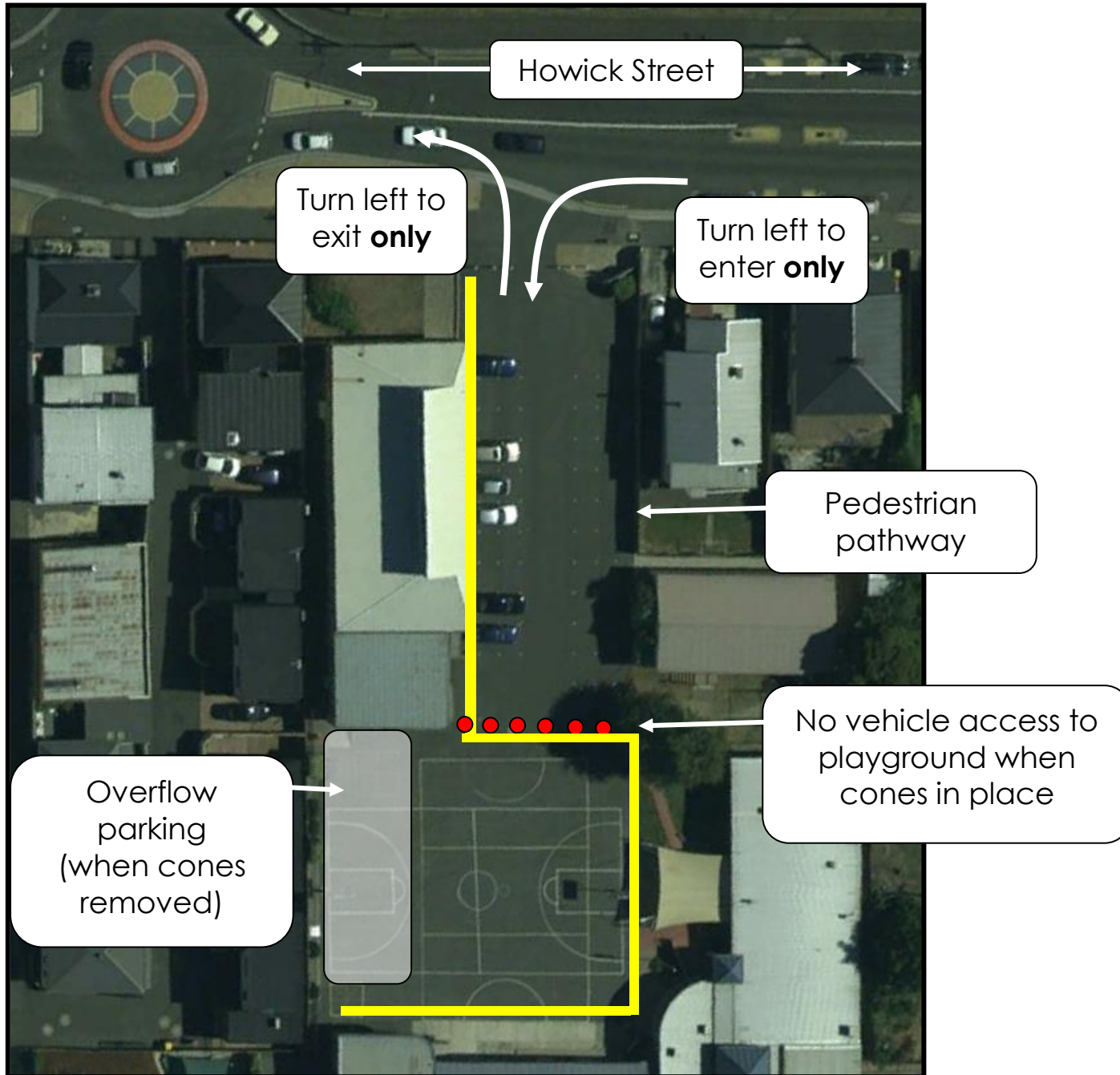


Figure 2: Preferred approach from Wellington Street

